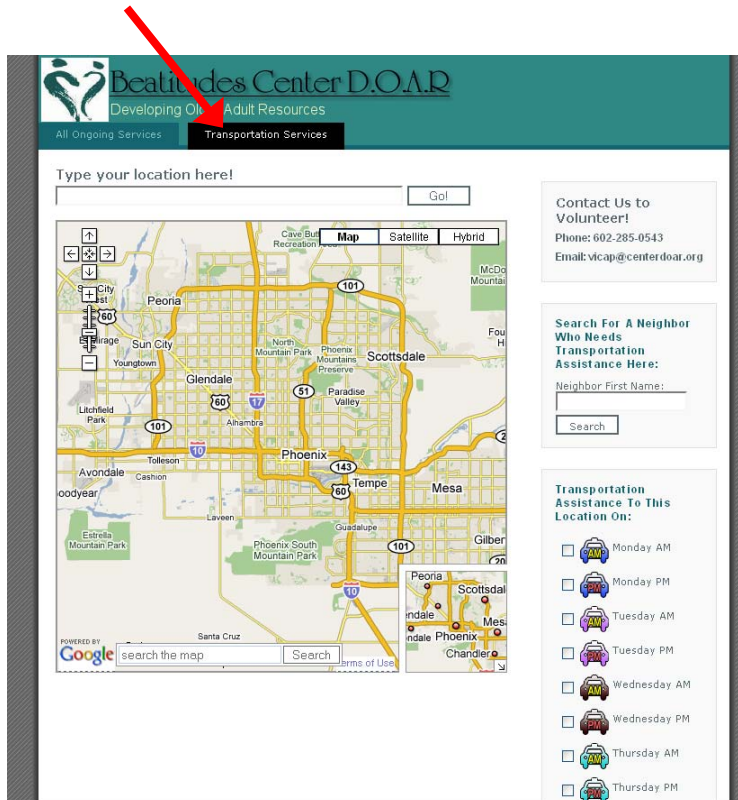


1

When you arrive at the home page for the Beatitudes Center D.O.A.R. Services, note the two tabs at the top of the page: *All Ongoing Services* and *Transportation Services*. To access the Transportation Services Map, click on the tab by that name or just enter this link in your browser address bar <http://maps.nijel.org/centerdoar/transportation.php>

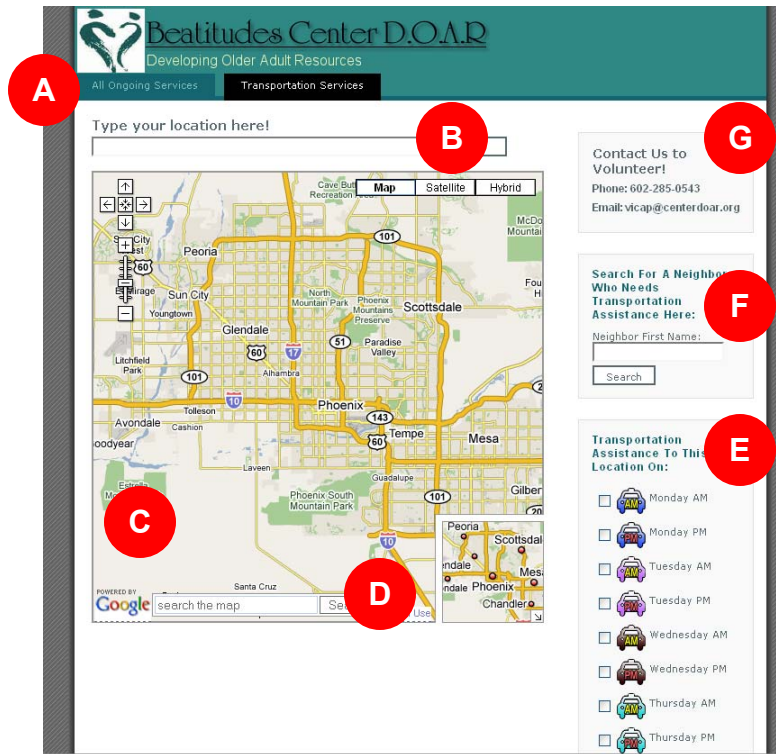
Click on this tab to Access the Transportation Map



The *Transportation Services Map* allows you to see the location of neighbors that need to be driven to an appointment and it shows the location of the appointment.

2

The image below highlights the different elements of the map.



A

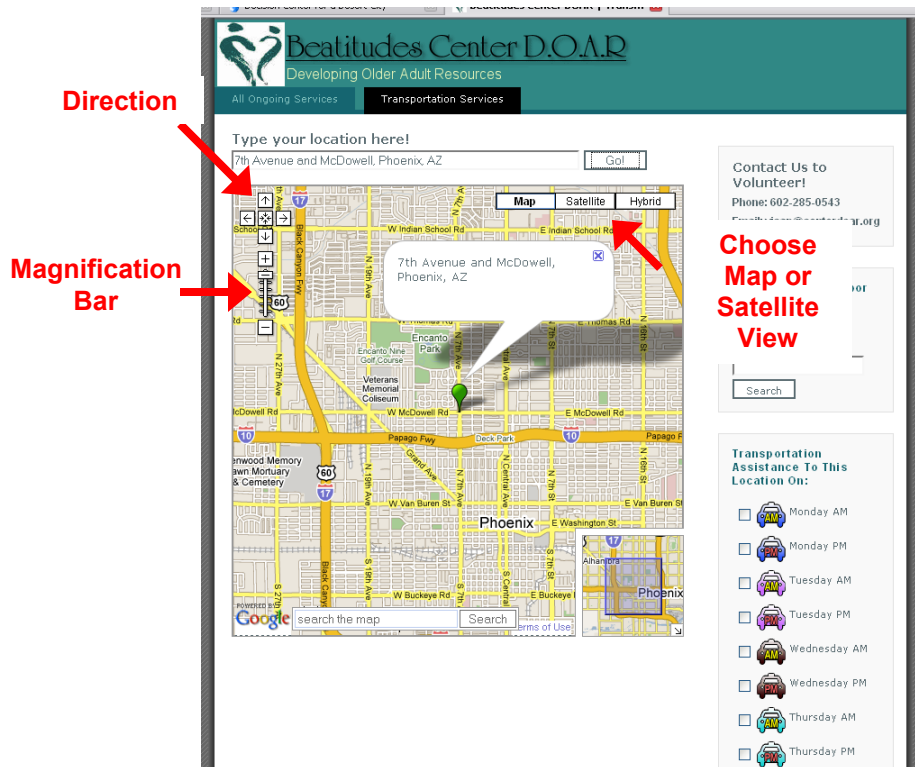
There are two tabs that identify different maps. *All Ongoing Services* provides locations of neighbors that need assistance live. *Transportation Services* provides locations of neighbors that need assistance getting to and from appointments.

B

Enter your address or nearest intersection (include City and State) to see the map zoom to a 2.5 mile radius surrounding that point. This optional feature can be used to help see the location of neighbors in close proximity to you.

C

The Map! You can control the way you view the map by changing the magnification, the direction, and/or the appearance.



Magnification. Click on the magnification bar to zoom in and out.

Direction. Click on one of the four arrows to move the map to the north, south, east, or west.

Appearance. The default map shows streets, though you can choose to view the map as a satellite image or as a hybrid (streets on top of the satellite image). Click on one of the buttons to see the map view change.

D

This search box allows you to type in a landmark, such as a store or pharmacy. This may help you locate your destination. You can also get directions to the landmark you enter (Note: this will take you to the Google Maps website).

E

Click on a box adjacent to an icon in the legend to see it appear on the map. Each icon is related to the appointment time and location needed by a Neighbor. So, if you click on the box next to *Monday PM* in the legend, you will see the location of appointments that Neighbors need to get too on Monday evening.

Beatitudes Center D.O.A.R.
Developing Older Adult Resources

All Ongoing Services Transportation Services

Type your location here!

Map Satellite Hybrid

GLORIA
Needs transportation assistance to this location on Monday PM

Contact Us to Volunteer!
Phone: 602-285-0543
Email: vicap@centerdoar.org

Search For A Neighbor Who Needs Transportation Assistance Here:
Neighbor First Name:

Transportation Assistance To This Location On:

- Monday AM
- Monday PM
- Tuesday AM
- Tuesday PM
- Wednesday AM
- Wednesday PM
- Thursday AM
- Thursday PM

F

Enter the First name of the Neighbor you are interested in helping to see information about their location, age range, and if they smoke or have pets.

Beatitudes Center D.O.A.R.
Developing Older Adult Resources

All Ongoing Services Transportation Services

Type your location here!

Map Satellite Hybrid

JOAN
Needs transportation assistance
City: Phoenix
Zip Code: 85009
Age Range: 61-70
Pet Owner: No
Smoker: No

Contact Us to Volunteer!
Phone: 602-285-0543
Email: vicap@centerdoar.org

Search For A Neighbor Who Needs Transportation Assistance Here:
Neighbor First Name:

Transportation Assistance To This Location On:

- Monday AM
- Monday PM
- Tuesday AM
- Tuesday PM
- Wednesday AM
- Wednesday PM
- Thursday AM
- Thursday PM



Contact Information. If you would like to volunteer to serve the Beatitudes Center D.O.A.R. community, please give us a call or send an email!



Get Started using the map!